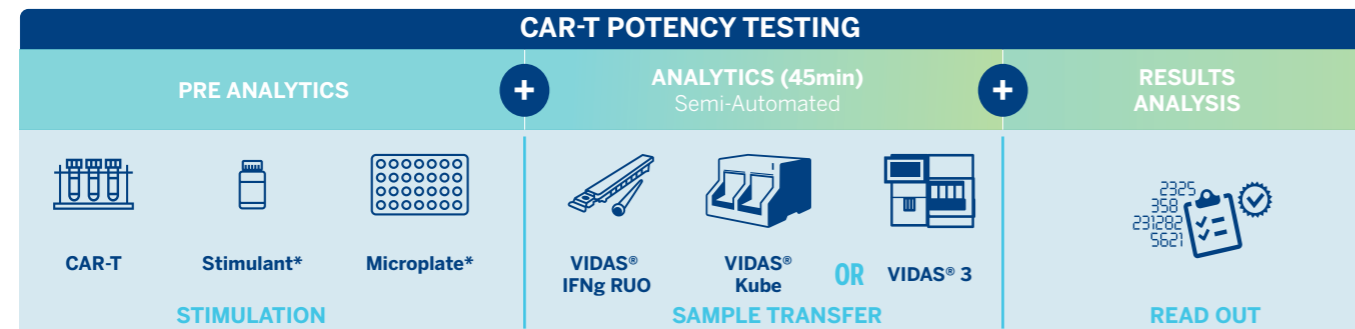
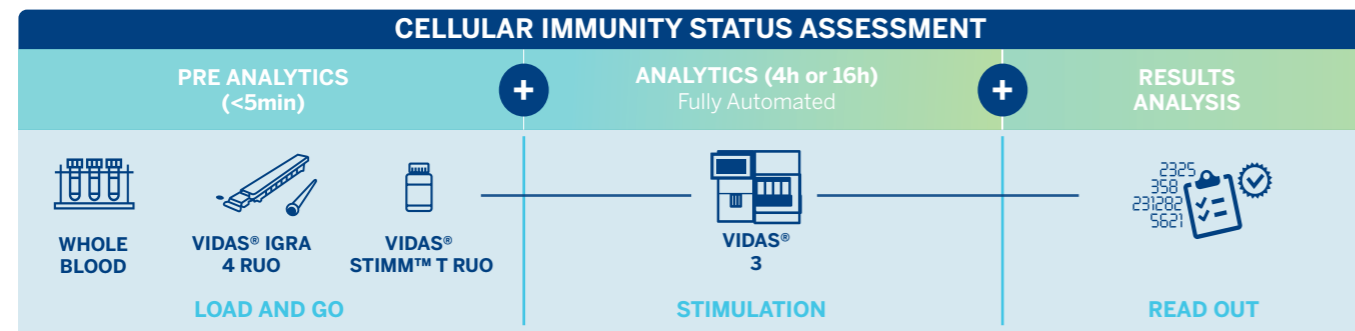




VIDAS® LIFE SCIENCES SOLUTIONS IN IMMUNE-ONCOLOGY RESEARCH



*Products recommended but not provided by bioMérieux : Stimulant : CAR-T target (e.g. CD19) / Microplate : 48 wells / Incubator Adapted Protocol for CAR-T potency testing available. Contact your local Sales representative



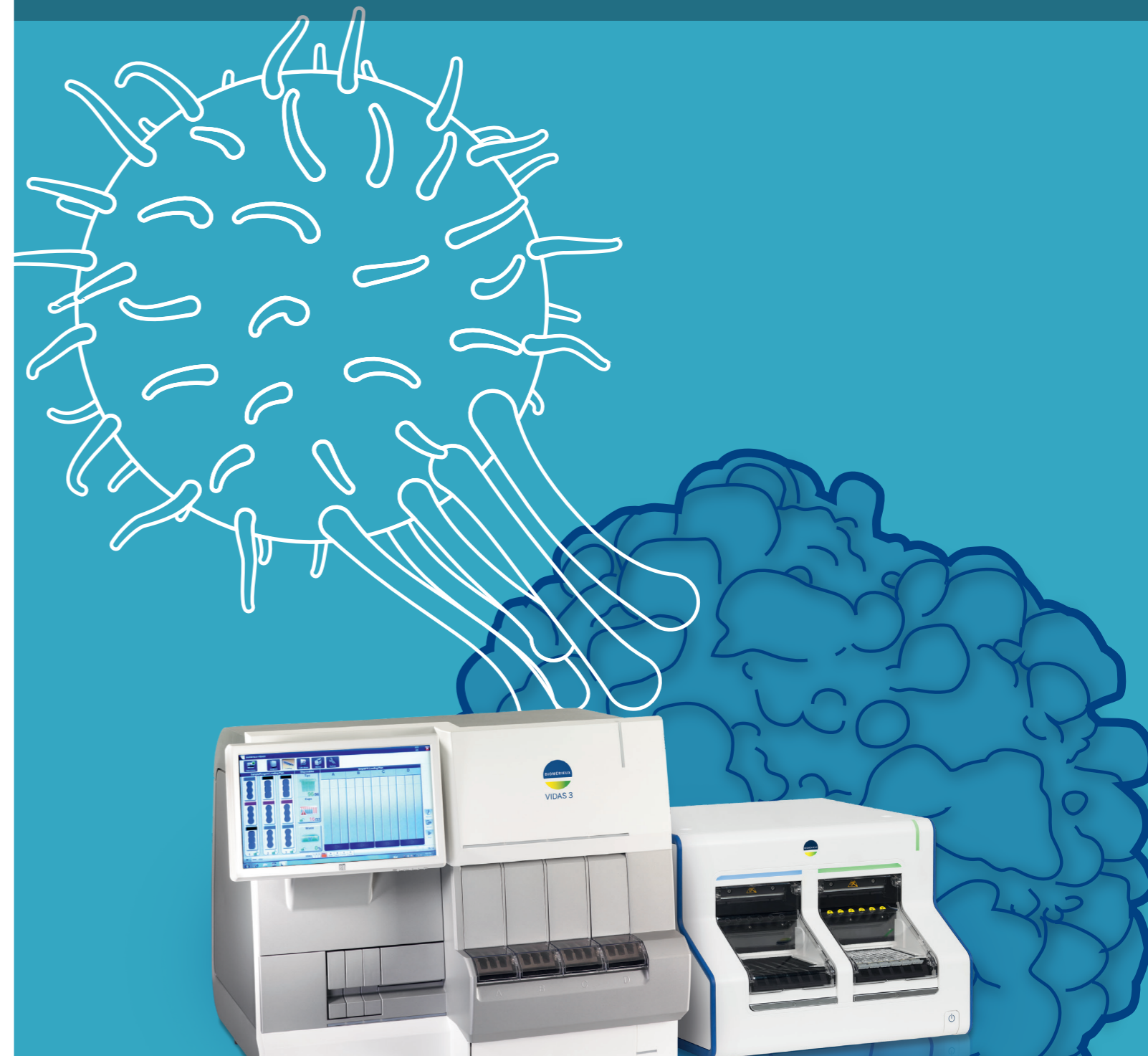
VIDAS® LIFE SCIENCES SOLUTIONS AT A GLANCE

FULLY AUTOMATED ASSAYS CMI RESPONSE	
PRODUCT NAME	REFERENCE
OPEN IGRA RUO	
VIDAS® IGRA 4 RUO	424329
VIDAS® IGRA 16 RUO	424328
STIMULANTS	
VIDAS® COVID STIMM RUO	424330
VIDAS® STIMM™ T RUO	424331
VIDAS® STIMM™ CMV RUO	424616
VIDAS® STIMM™ BASIC RUO	424615

ADDITIONAL ASSAYS	
PRODUCT NAME	REFERENCE
CYTOKINES	
VIDAS® IFNg RUO	423304
VIDAS® IL-6 RUO	423305

VIDAS® LIFE SCIENCES SOLUTIONS

BRING YOUR IMMUNE-ONCOLOGY RESEARCH INTO A NEW ERA



932572/003/GBA. This document is not legally binding. bioMérieux reserves the right to modify specifications without notice. / BIOMERIEUX, the BIOMERIEUX logo, PIONEERING DIAGNOSTICS, VIDAS are used, pending and/or registered trademarks belonging to bioMérieux or one of its subsidiaries or one of its companies. Any other name or trademark is the property of its respective owner. / bioMérieux S.A. RCS Lyon 673 620 399 / Printed in France / ENVO / 537 619 449 RCS Lyon

IMMUNE-ONCOLOGY: OPENING UP NEW PERSPECTIVES FOR CELL-MEDIATED IMMUNE EXPLORATION

> **T-CELLS**, a critical component of the adaptive immune system, play a key role in identifying and eliminating cancer cells

> **NEW CANCER THERAPIES** targeting T-cells have emerged over the past decade: Immune checkpoint inhibitors (ICIs), Chimeric antigen receptor T (CAR-T) therapy...

> **MONITORING T-CELLS IMMUNITY IS BECOMING ESSENTIAL IN THIS CONTEXT**

> **CURRENT TESTING TOOLS FOR CMI* RESPONSE HAVE CERTAIN LIMITATIONS FOR ROUTINE RESEARCH**

Time consuming	<ul style="list-style-type: none"> • Many analytical steps • High hands-on time • Not available 24h/24h
Lack of robustness	<ul style="list-style-type: none"> • Low standardization • Prolonged cell isolation: cell death and reduced sample quality • Manual preparation: Increased risks of contamination • Technician dependant: variability of results



**SIMPLIFY YOUR CMI EXPLORATION
WHILE ACHIEVING A HIGH LEVEL OF
STANDARDIZATION**

*CMI : CELL MEDIATED IMMUNITY

VIDAS® LIFE SCIENCES SOLUTIONS

EASY TO PERFORM, ROBUST ASSAYS, REDUCED HANDS-ON TIME

Innovative Research Tools Potency Testing – CMI status assessment

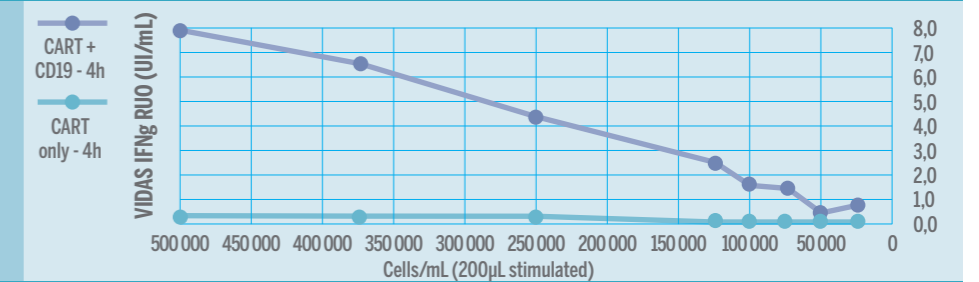
POTENCY TESTING:

Provide **standardization in IFN read-out** and **simplification** into your practices

VIDAS® IFNg RUO + any CAR-T target*

- Single test concept
- Calibration curve stable 28 days
- Stimulation protocol for CAR-T with its target available

EXAMPLE OF POTENCY TESTING Incubation 4h – target : CD19



Cells/mL: 200µL stimulated | CAR-T cell : incubation ~4h => Linear results until 75 000 cells/mL

CMI STATUS ASSESSMENT IN 4 HOURS:

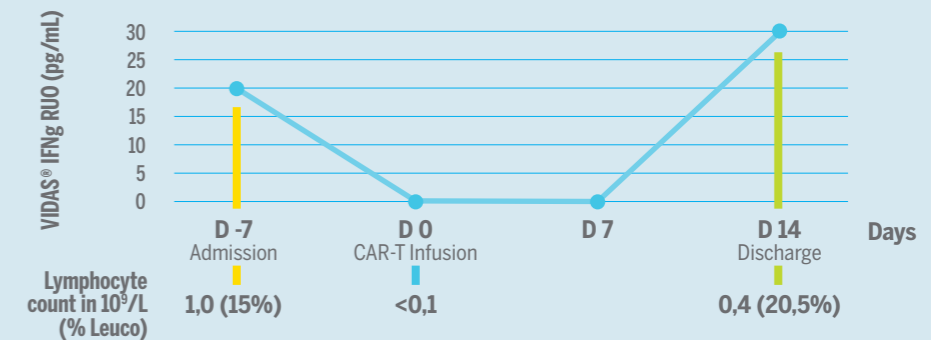
Fully automated solutions that can be easily integrated into your routine research lab

VIDAS® IGRA 4 RUO + VIDAS® STIMM™ T

- Whole blood: no sample preparation
- Reduced hands-on-time
- Simply load & go
- Reduced stimulation time

EXAMPLE OF T-CELL FUNCTIONALITY MONITORING WITH IFNY

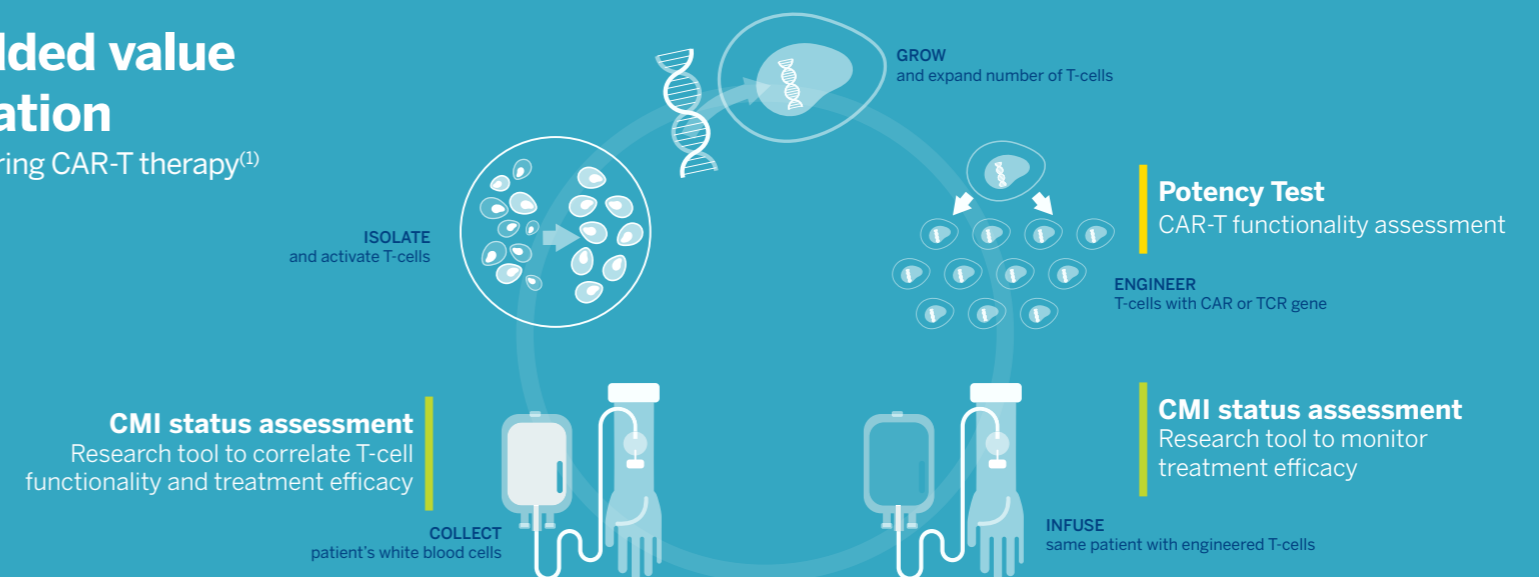
- > Correlation between treatment efficacy and assessment of T-cell functionality
- > T-cell levels remain low despite successful treatment



CAR-T
ICITs

Example of added value of CMI exploration

In the Patient Journey during CAR-T therapy⁽¹⁾



*Products recommended but not provided by bioMérieux : Stimulant : CAR-T target (e.g. CD19) / Microplate : 48 wells / Incubator. Adapted Protocol for CAR-T potency testing available. Contact your local Sales representative
1. Rubio et al. Bull Cancer 2021